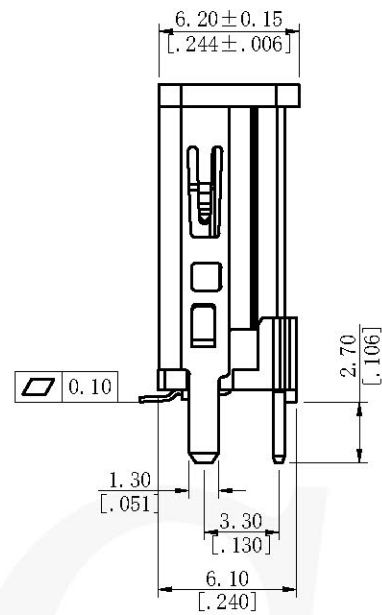
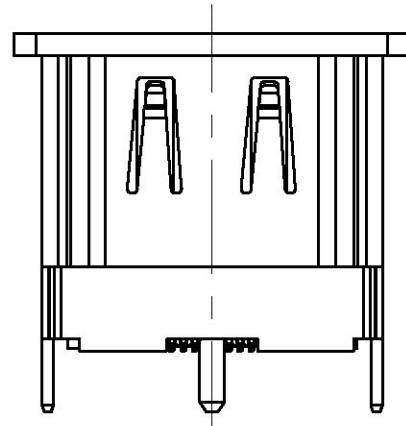
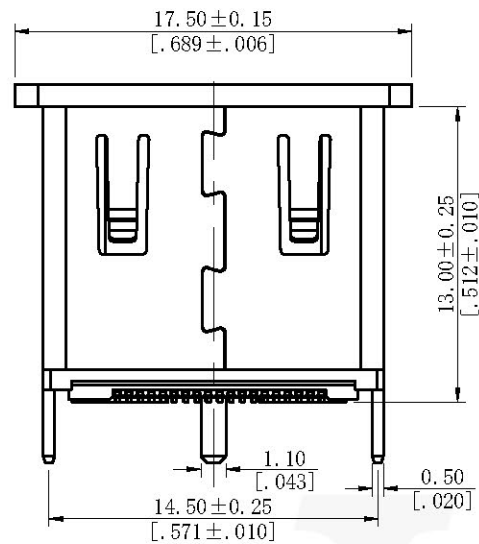
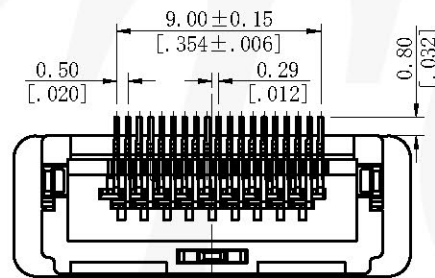
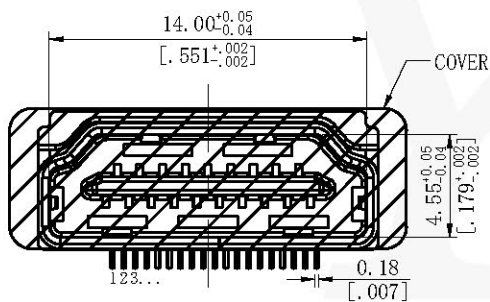


REV	REVISION	NAME	DATE

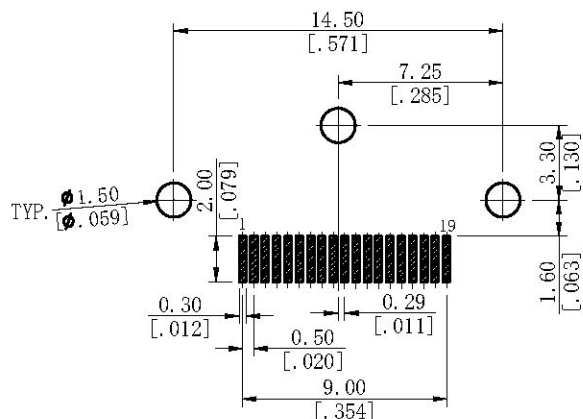


**Electrical:**  
 Voltage Rating: 40V AC Max  
 Current Rating: 0.50AMP  
 Contact Resistance: 30mΩ Max  
 Insulation Resistance:  
 100MΩ Min (Unmated)  
 10MΩ Min (Mated)  
 Dielectric Withstanding Voltage:  
 500V AC for 1 Minute (Unmated)  
 300V AC for 1 minute (Mated)  
**Mechanical:**  
 Housing Material: LCP (UL94V-0), Color: Black  
 Contact Material: Copper Alloy (C5191)  
 Contact Plating:  
 Au Plated on Contact Area, Tin Plated on Solder Area, Nickel Underplating Over All  
 Shell: SPCC Or Copper Alloy  
 Shell Plating: Gold Or Nickel  
 Insertion Force: 44.1N Max  
 Withdrawal Force: 9.8-39.2N  
 Durability: 10000 Cycles  
**Environmental:**  
 Operating Temp Range: -20°C ~ +85°C

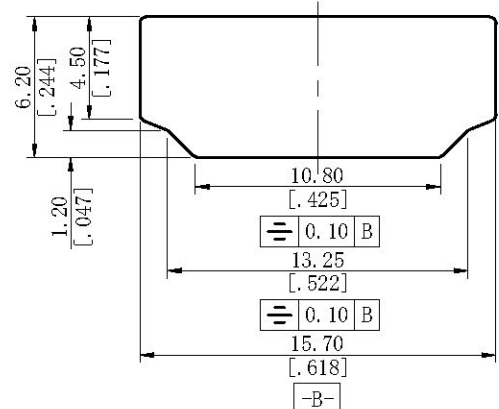


**Ordering Code:**  
 6611-19FV XX X XX X01

Contact Plating S0=Gold Flash/Tin S1=3u" Gold/Tin S2=5u" Gold/Tin S3=10U"Gold/Tin S4=15U"Gold/Tin S5=30U"Gold/Tin C0=Gold Flash	Shell Material B=Brass S=SPCC	Shell Plating NI=Nickel C0=Gold Flash G1=3u" Gold C2=5u" Gold C3=10U"Gold C4=15U"Gold C5=30U"Gold	Packing A=Tray T=Tube R=Reel
--	-------------------------------------	--	---------------------------------------



Recommended P.C.B Layout (Top Side)  
 (PCB BOARD TOLERANCE ± 0.05)



Recommended Panel Cut Out Dimension

**YTCO**  
 2022.07.29  
 ISSUED

ITEM	Part No.
Standard	6611-19FVSOBNIR01
Alternate	

THIS DRAWING IS A CONTROLLED DOCUMENT

TOLERANCES UNLESS OTHERWISE SPECIFIED	UNITS mm/inch	SCALE FIT	SIZE A4
0 PLC ± —			
1 PLC ± 0.30/.012			
2 PLC ± 0.25/.010			
3 PLC ± 0.20/.008			
4 PLC ± 0.10/.004			
ANGLES ± 3°			

**YTCO TECHNOLOGY**  
 HTTP://WWW.YTCO.CO E-MAIL:SALES@YTCO.CO

TITLE	HDMI TYPE A SMT VERTICAL BOARD MOUNT FEMALE CONNECTOR H=13.00MM
PART NO.	6611-19FVXXXXXX01
DRAWING NO.	6611-19FV
FILE PATH	A/D/YTCOTZ/HDMI/AF
SHEET	1 OF 1
REV	A