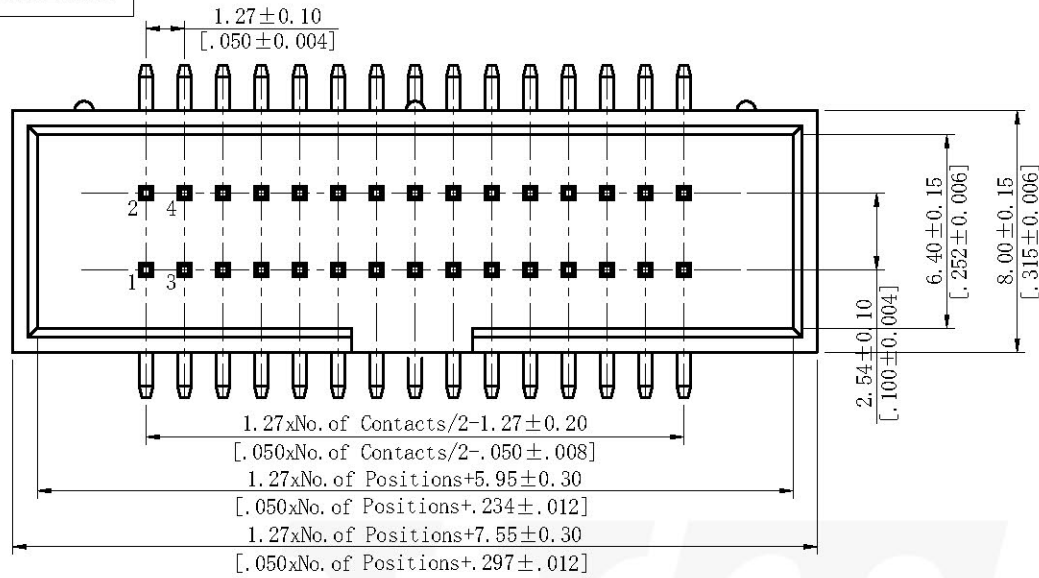


RoHS COMPLIANT

* DUE TO TECHNICAL PROGRESS, ALL THE INFORMATION PROVIDED IS SUBJECT TO CHANGE WITHOUT PRIOR NOTICE.

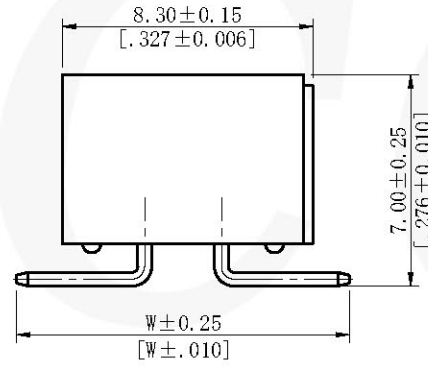
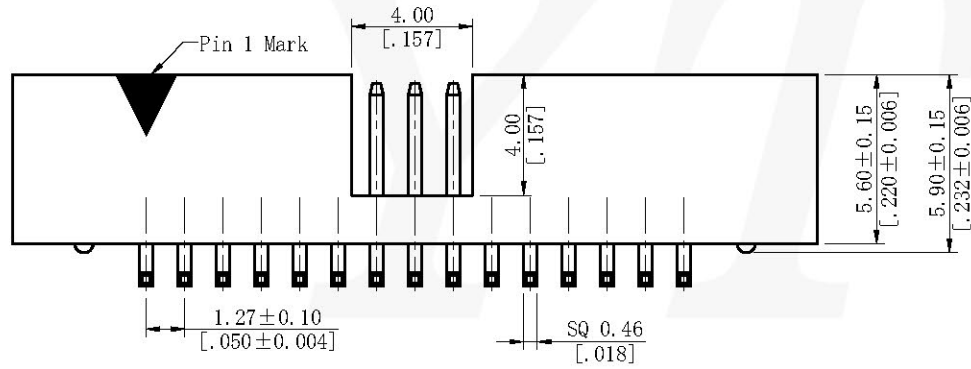
REV	REVISION	NAME	DATE



Electrical:
 Current Rating:1.0AMP
 Contact Resistance:20mΩ Max
 Insulation Resistance:1000MΩ Min
 Withstanding Voltage:500V AC/DC

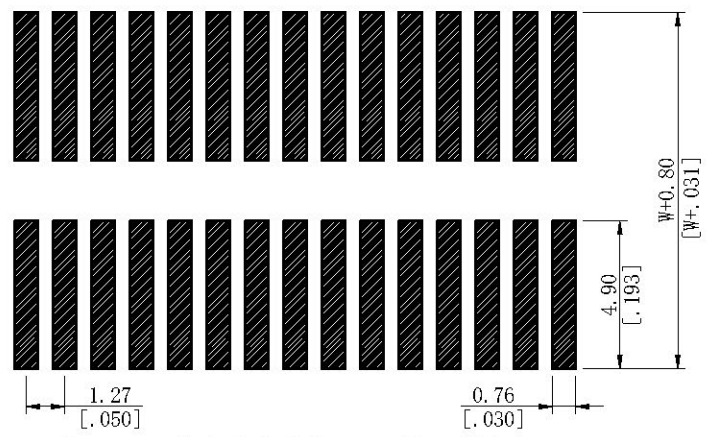
Mechanical:
 Contact Material:Brass(SQ 0.46mm)
 Contact Plating:Au or Sn Over Ni
 Insulator Material:Polyester UL94V-0
 Standard:PA6T

Environmental:
 Operating Temp Range:-40℃~+105℃
 Max.Processing Temp:+230℃ for 30~60 Seconds
 +260℃ for 10 Seconds



Ordering Code:
 3040-XX M XX X 000 X 01

No. of Pins	Contact Plating	Insulator Material	Packing
10=10P 34=34P 14=14P 40=40P 16=16P 44=44P 20=20P 50=50P 24=24P 60=60P 26=26P 64=64P 30=30P 80=80P 32=32P 100=100P	C0=Gold Flash C1=3u" Gold C2=5u" Gold C3=10U"Gold C4=15U"Gold C5=30U"Gold S0=GoldFlash/Tin SN=Tin SM=Matte tin	A=BK-PBT B=BK-PA6T C=BK-PA9T D=BK-LCP G=CY-PBT H=CY-PA6T	A=Tray T=Tube P=Tube+CAP R=Tape& Reel+CAP



Recommended P.C.B Layout (Top Side)
 (PCB BOARD TOLERANCE±0.05)



ITEM	DIM. W	Mating	Part No.
Standard	11.00 (.433)	5141	3040-XXMG0B000T01
Alternate			

THIS DRAWING IS A CONTROLLED DOCUMENT				 YTCO TECHNOLOGY HTTP://WWW.YTCO.CO E-MAIL:SALES@YTCO.CO
TOLERANCES UNLESS OTHERWISE SPECIFIED	UNITS mm/inch	SCALE FIT	SIZE A4	
0 PLC ± —	DRWN BY Xu	DATE 6/25/2022	TITLE BOX HEADER, 1.27X2.54MM PITCH, SMT, H=5.60	
1 PLC ± 0.30/.012	ENGINEER Zhang	DATE 6/25/2022	PART NO. 3040-XXMXX000X01	
2 PLC ± 0.25/.010	CHECKED BY Mike	DATE 6/25/2022	DRAWING NO. 3040-M	
3 PLC ± 0.20/.008	APPROVED BY Andy	DATE 6/25/2022		
4 PLC ± 0.10/.004				
ANGLES ± 3°	PROJ.	FACE CODE 594309442	FILE PATH A/D/YTCOTZ/Box Header/1.27x2.54mm	
			SHEET 1 OF 1	
			REV A	