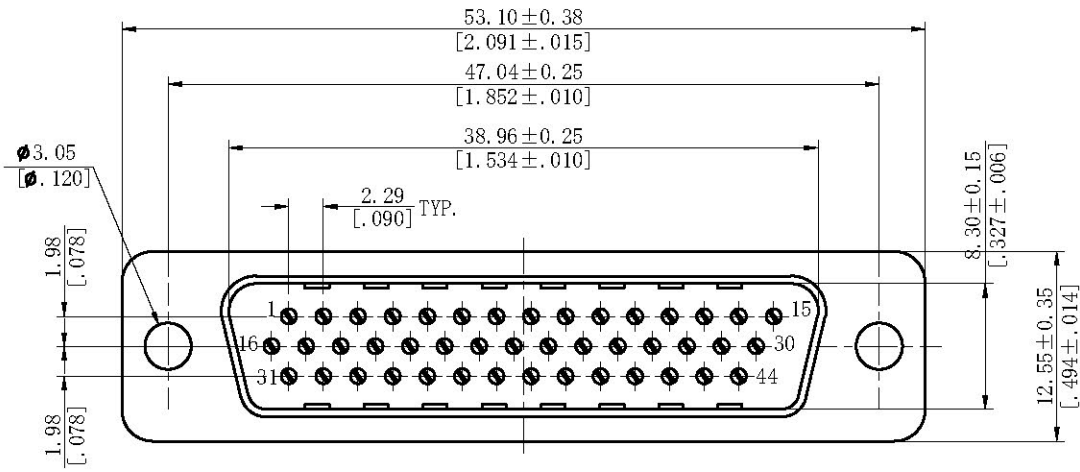
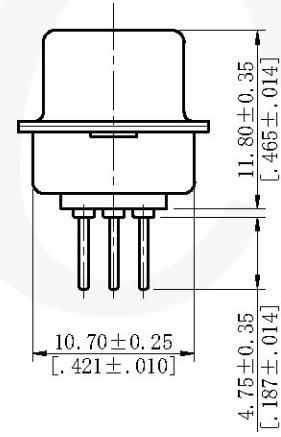
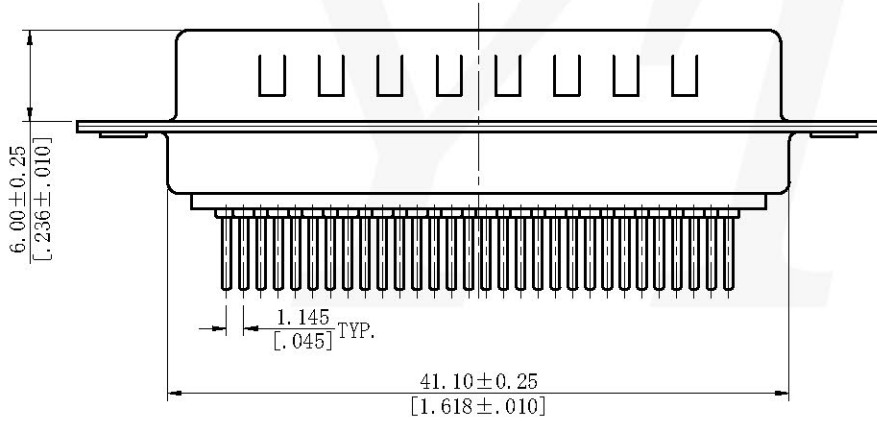


| REV | REVISION | NAME | DATE |
|-----|----------|------|------|
|     |          |      |      |



**Electrical:**  
 Current Rating:3.00AMP  
 Contact Resistance:20mΩ Max  
 Insulation Resistance:1000MΩ Min  
 Dielectric Withstanding Voltage:500V AC for 1 Minute  
**Mechanical:**  
 Insulator:PBT+30% Glass Filled Polyester UL94V-0  
 Contact:Copper Alloy  
 Contact Plating:Au or Sn over Ni  
 Shell:Steel, Nickel Plated  
 Fork:Copper Alloy, Tin over Ni Plated  
 Screw:Steel Or Copper Alloy, Nickel Plated  
 Nut:Steel Or Copper Alloy, Nickel Plated  
**Environmental:**  
 Operating Temp Range:-55℃~+105℃

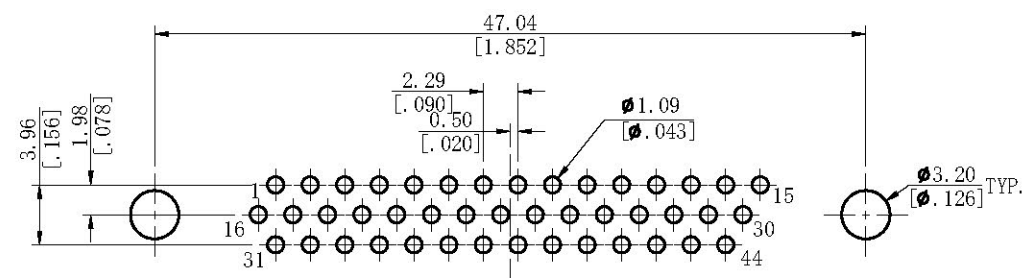


Ordering Code:  
 6031-44M X XX X A 01

| Mounting Style                 | Contact Plating                      | Color Insulator              |
|--------------------------------|--------------------------------------|------------------------------|
| 0=Without Fork<br>Without Nut  | C0=Gold Flash<br>S0=GoldFlash/Tin    | B=Black<br>W=White<br>U=Blue |
| 5=With Front Nut               | S1=3u" Gold/Tin                      |                              |
| 6=With Back Nut                | S2=5u" Gold/Tin                      |                              |
| 7=With Back Fork               | S3=10u" Gold/Tin                     |                              |
| 8=With Back Fork<br>With Screw | S4=15u" Gold/Tin<br>S5=30u" Gold/Tin |                              |

| NAME | DIM "L"        |                |                |                |                |
|------|----------------|----------------|----------------|----------------|----------------|
| NUT  | 3.00<br>(.118) | 4.00<br>(.157) | 4.80<br>(.189) | 6.00<br>(.236) | 6.50<br>(.256) |

| Code           | 0 | 5 | 6 | 7 | 8 |
|----------------|---|---|---|---|---|
| Mounting Style |   |   |   |   |   |



Recommended P.C.B Layout (Top Side)  
 (PCB BOARD TOLERANCE ± 0.05)

THIS DRAWING IS A CONTROLLED DOCUMENT

|                                       |                |             |  |
|---------------------------------------|----------------|-------------|--|
| TOLERANCES UNLESS OTHERWISE SPECIFIED | UNITS mm/inch  | SCALE FIT   | SIZE A4  |
| DRAWN BY Xu                           | DATE 7/29/2022 | TITLE       | HIGH DENSITY D-SUB MALE STRAIGHT DIP BOARD MOUNT |
| ENGINEER Zhang                        | DATE 7/29/2022 | PART NO.    | 6031-44MXXXXA01                                  |
| CHECKED BY Mike                       | DATE 7/29/2022 | DRAWING NO. | 6031   |
| APPROVED BY Andy                      | DATE 7/29/2022 | FILE PATH   | A/D/YTCOTZ/D-SUB/HDP                             |
| PROJ. 594309442                       | SHEET 1 OF 1   | REV A       |  |

**YTCO TECHNOLOGY**  
 HTTP://WWW.YTCO.CO E-MAIL:SALES@YTCO.CO